

Ministry of Education
Male', Maldives

REGIONAL POLICY OF RUNNING SCHOOLS

Introduction

Under the current government's regionalization policy of dividing Maldives in to 7 regional provinces, to provide services to the public from a place closest to them, the governing policy of the schools is decided as such. In this process every region will have a regional administrative body operating under the name of "Local Education Authority" for the governance of such pertaining to education.

Objective

The main objective of establishing a Provincial office pertaining to education (Local Education Authority) is to give every province its own free will of governing and planning of schools and to make the regional education office responsible for such pertaining to education in its region.

In this sense:

- Increase the local public participation in the governance of schools pertaining to its province
- Acquire the opinion and instruction of the local public of the province to its fullest in the governance of the schools
- Give every province the opportunity to do things pertaining to education independently
- Give the provincial office its will to set and establishing the facilities required in extending to the students the national curriculum to its fullest
- Give the provincial office the will and power to take action to currently that may be required in case of change in national curriculum or for the improvement in the academic result of the schools
- Give the provincial office the opportunity to participate in training and experiencing the supervision of schools to preserve quality of education
- To give the local public the opportunity in choosing the education given by the schools as best fit for them
- Encourage the schools in the province to create a competitive development amongst them and improve the standard of the schools

Current working strategy

In the current working strategy of the schools, all the schools in the country with those present in Male' are divided into six zones and is run by the administrative section of the Ministry of Education.

Each of these zones is governed by a director with the aid of 6 administrative staff.

Current Zone Divisions:

1. Male' Zone (Male', Hulhumale' and Villimale' schools with the Education and Vocational Training Centre for children at Maafushi)
2. North Zone (Haa Alif, Haa dhal and Shaviyani Atoll)
3. North central Zone (Noonu, Raa, Baa, Lhaviyani Atoll)
4. Central Zone (Kaafu, Alifu Alifu, Alifu dhal, Vaavu and Meemu Atoll)
5. South central Zone (Faafu, Dhaal, Thaa and Laamu Atoll)
6. South Zone (Gaafu Alif, Gaafu Dhaal, Gnaviyani and Seenu Atoll)

Presentation of the process of governing schools by Regionalization Policy

Under the regionalization policy of dividing Maldives in to 7 regional provinces to provide services to the public from a place closest to them, the policy of governing the schools is also taken by dividing the country in to 7 regions, in every region, for the governance of the schools in them, an administrative body pertaining to education will be established under the name of "Local Education Authority".

Methodology of formation of Regional Board of Education

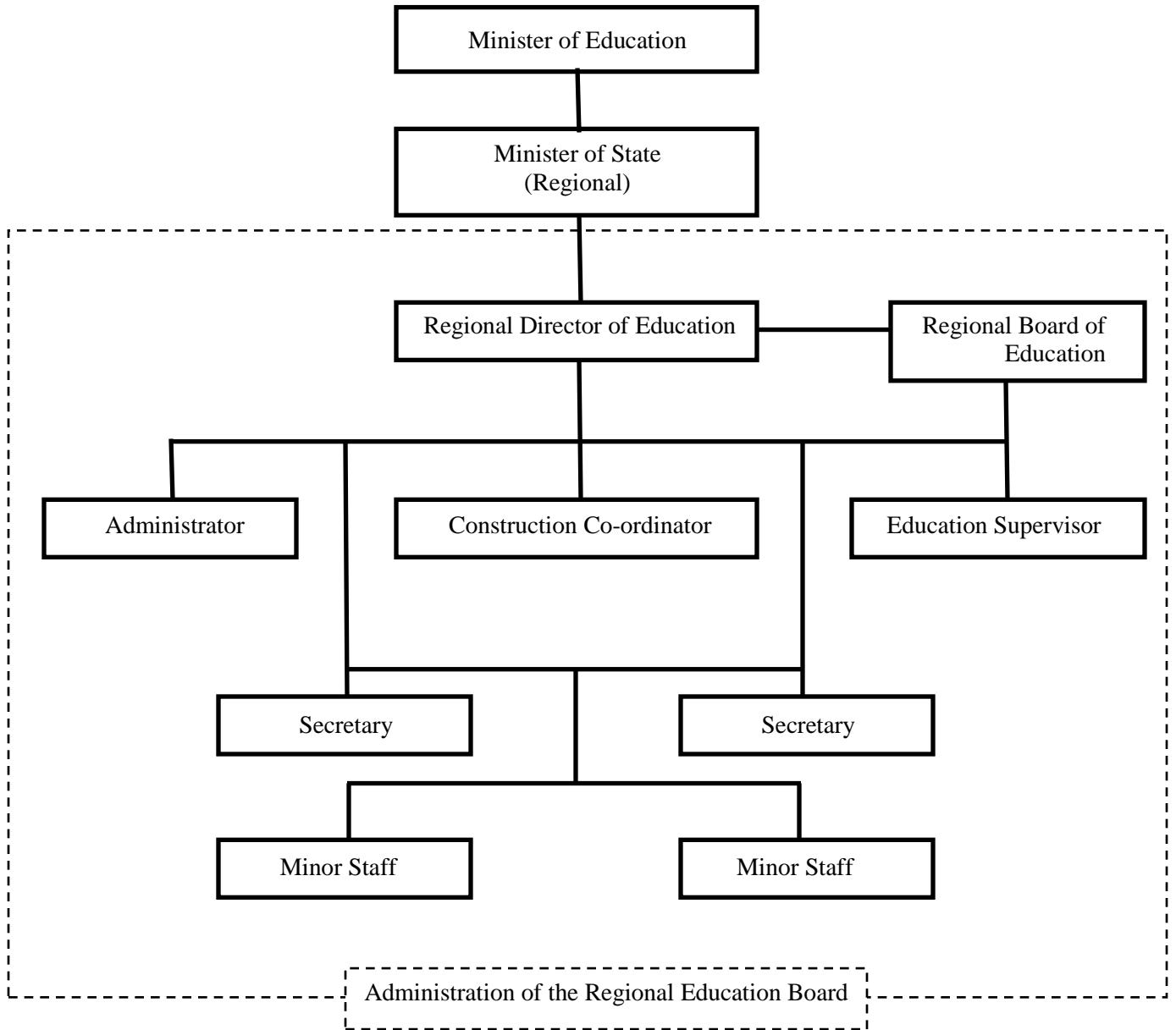
Regional Board of Education is formed to advice the Local Education Authority in the region. This Board will operate under the governance of Minister of State of that region with the advice of Minister of Education.

The Members of this Board will be elected as follows.

1. Representative elected amongst the Principals of the schools
2. Representative elected amongst the Presidents of the School Board
3. Representative elected amongst the Atolls committee/Atolls council (one from each atoll)
4. Representative elected amongst the Co-ordinators of Teachers Resource Centre (T.R.C.)

This Board will be chaired by the Regional Director of Education.

Administrative structure of the Local Education Authority



Responsibility of the Local Education Authority

The main responsibility of the Local Education Authority is to responsibly organize and execute, in a way that would benefit the masses of that region, such work required to enforce in the schools, the educational policies defined by the Ministry of Education.

Specified below are the points to be considered;

1. To design the education and character building imparted by the schools to be aimed at providing complete and wholesome education and character building.
2. That the activities organized and executed to enforce the education policies are directed towards the benefit of the masses of that region.
3. Form and govern the regional school boards and provide the advice, instruction and assistance as required.
4. To design the education provided in line with the development of the economy and society.
5. To broaden the preschool, primary, secondary and high school education.
6. To gauge the standard of the education provided and to organize such programmes in increasing the standard of education in the schools.
7. To design and release the budget required to run the schools.
8. To organize and execute Community Educational Programmes and other programmes required to increase the awareness of public towards education.
9. To open to students and to the youth the opportunities for vocational training.
10. To organize amongst the regional schools the activities that are required to be organized for teaching, governing and extra curriculum.

Responsibilities of the Regional Board of Education

The responsibilities of the Regional Board of Education are to advice, instruct and provide assistance required by the local education Authority.

20 November 2008